

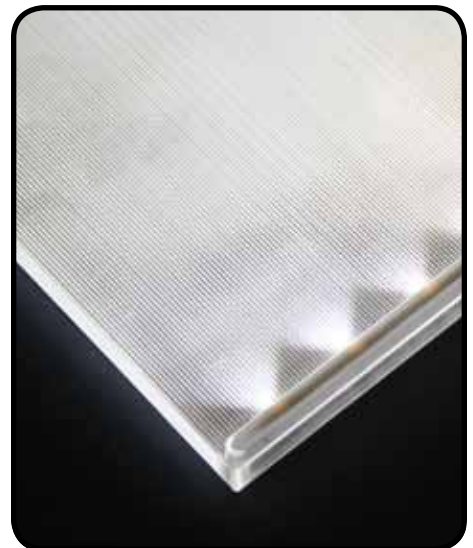
A unique process converts acrylic sheet material to a lighted surface, utilizing light emitting diodes (LEDs) as the light source. Lumishelf™ surfaces replace conventional glass or acrylic surfaces and separate fluorescent lights with a fully integrated eco-friendly solution.

Lumishelf™ is a hardened acrylic surface with an integral LED lighting system and 5' (1524 mm) cord. Lumishelf™ can be used to replace existing surfaces on Glass Shelf Frames (GSF) or Lighted Upper Shelf Assembly (LUSA).



- **Environmentally Safe**
- **Spectacular product lighting**— entire shelf surface is evenly lit, not directional as with fluorescent or incandescent light sources
- **Low power consumption**— Nearly a 50% reduction in energy usage from T5 fluorescent fixtures that require 28W per 48" lamp
- **Long life**— up to 70,000 hour life with no lamp replacement (16 years at 12 hours per day), and nearly maintenance-free
- **Color temperature** - 6000K
- **LEDs operate** on safe 12V current
- **Contains no mercury** or heavy metals
- **LEDs emit no UV** light eliminating product damage
- **Wear surface specially processed** hardened acrylic
- **Extremely low heat generation** protects sensitive products, reducing cooling costs
- **Available with white solid plastic** reflector on bottom, or use without for two direction lighting— surfaces without bottom reflector have edge highlighted by LEDs

| Shelf Width & Approximate Power Consumption Wattage | |
|---|-------------------------|
| Shelf Width | Approximate Consumption |
| 48" | 15W |
| 36" | 12W |
| 30" | 10W |
| 24" | 8W |
| 18" | 6W |



Transformers for LED Products

- Transformers are required for Lumicanopy, Lumishelf[™], and Lumiback, ordered separately
- 60 watt capacity, 7.5 vertical feet
- Single transformer powers five 36" (914 mm) shelves and Lumicanopies
- UL/CE/CB Listed
- 60" (1524 mm) AC power cord and 72" (1829 mm) DC cord
- Maximum 20 transformers per 20 amp circuit

LSST5A

LSST Transformers for LED Products
 5 60 watts, 7.5 vertical feet
 A Adapter



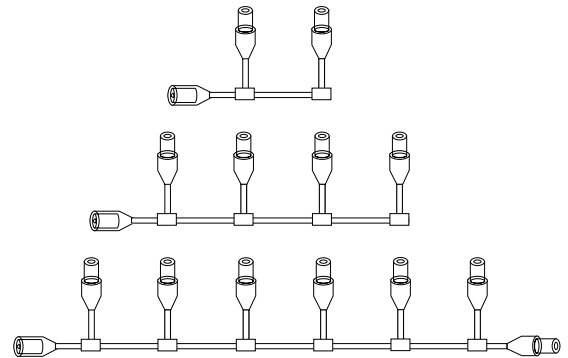
Spider Cables for LED Products

- LSS2WC and LSS6WC Spider Cables have connections approximately 6" (152 mm) OC and each lead is approximately 6" long
- LSS4WC Spider Cable has 60" (1524 mm) leads, 60" (1524 mm) OC
- Spider Cables can be utilized to connect multiple surfaces or backs to a single transformer
- Refer to transformer information for capacities

LSS(OPT)WC

LSS Spider Cables for LED Products
 OPT 2 = 2 Connections
 4 = 4 Connections
 6 = 6 Connections
 WC Wire Connectors

| Part Number | Connections |
|-------------|-------------|
| LSS2WC | 2 |
| LSS4WC | 4 |
| LSS6WC | 6 |

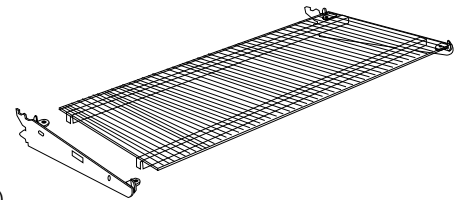


Lumishelf[™] Acrylic LED Shelf Assembly

- Light-guide plate directs light on merchandise, improving visibility
- Assembly contains LED Shelf Surface and Glass Shelf Frame
- Load capacity 40 lbs

LSSGA(NW)(ND)-(OPT)

LSSGA Lumishelf[™] Surface with GSF Frame Assembly
 NW Nominal Width 36" or 48" (914 mm or 1219 mm)
 ND Nominal Depth 10" to 18" in 2" increments (254 mm to 457 mm in 51 mm increments)
 R R=Optional Reflector
 Blank= No Reflector

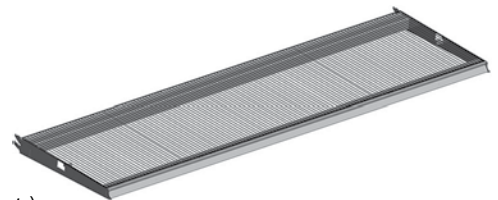


Lumishelf[™] Acrylic LED LUSF Assembly

- Includes LUSA frame with tag mold front, Lumishelf[™] surface
- Surface is recessed into frame (No LED edge highlighting)
- Load capacity 200 lbs

LSSLA(NW)(ND)-(OPT)

LSSLA Lumishelf[™] Upper Shelf with LUSF Frame Assembly
 NW Nominal Width 36" or 48" (914 mm or 1219 mm)
 ND Nominal Depth 12" to 24" in 2" increments (305 mm to 610 mm in 51 mm increments)
 OPT Blank= No Reflector
 R=Optional Reflector



NOTE:

Must order required transformer separately. Transformer is UL/CE/CB listed. Spider connector cables utilized to connect multiple surfaces to a single transformer. Refer to Transformer information for capacities.



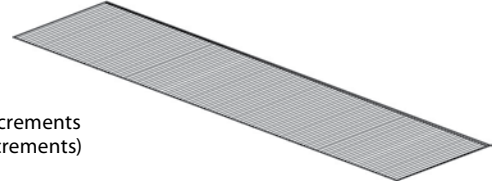
Lumishelf™ Surface for GSF

- Lumishelf™ Surface only for installation on Glass Shelf Frame (GSF)
- Frame with two crossbars is recommended (shown below)
- 60" (1524 mm) cord



LSSG(NW)(ND)-(OPT)

- LSSG Lumishelf™ Surface for GSF
- NW Nominal Width 3' or 4' (914 mm or 1219 mm)
- ND Nominal Depth 10" to 18" in 2" increments (254 mm to 457 mm in 51 mm increments)
- R R=Optional Reflector
Blank= No Reflector



NOTE!

Minimum order is 20 shelves of any size.

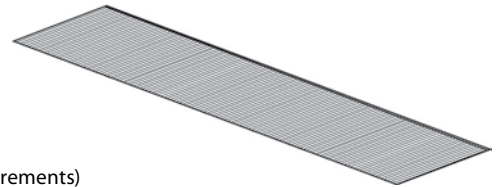


Lumishelf™ Surface for LUSF

- Light-guide plate directs light onto the merchandise, which improves visibility
- Load capacity 100 lbs, when used with Lighted Upper Shelf Frame, LUSF
- 60" (1524 mm) cord

LSSL(NW)(ND)-(OPT)

- LSSL Lumishelf™ Surface
- NW Nominal Width 3' or 4' (914 mm or 1219 mm)
- ND Nominal Depth 12" to 24" in 2" increments (305 mm to 610 mm in 51 mm increments)
- R R=Optional Reflector
Blank= No Reflector



Lighted Upper Shelf Frame for Lumishelf™ Surface

LUSF-(NW)(ND)

- LUSF Lighted Upper Shelf Frame for Lumishelf™ Surface
- NW Nominal Width 3' or 4' (914 mm or 1219 mm)
- ND Nominal Depth 12" to 24" in 2" increments (305 mm to 610 mm in 51 mm increments)



NOTE!

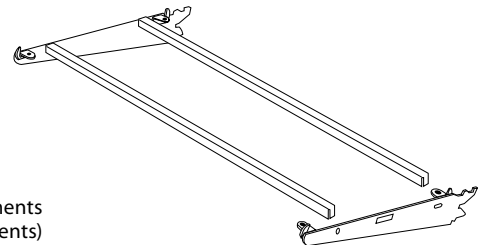
LUSF and GSF require different size surfaces.

Lumishelf™ Glass Shelf Frame

- Glass Shelf Frame includes two crossbars

GSF(NW)(ND)-2B

- GSF Glass Shelf Frame
- NW Nominal Width 3' or 4' (914 mm or 1219 mm)
- ND Nominal Depth 12" to 24" in 2" increments (305 mm to 610 mm in 51 mm increments)
- 2B 2 Crossbars

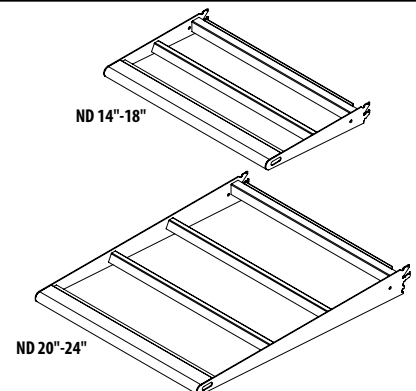


Lighted Upper Shelf with Bullnose Front

- Use with LSSL(NW)(ND)
- Use with standard Maxi Line

LUSFBN(NW)(ND)

- LUSFBN....Lighted Upper Shelf with Bullnose Front
- NW Nominal Width 3' or 4' (914 mm or 1219 mm)
- ND Nominal Depth 14" to 24" in 2" increments (305 mm to 610 mm in 51 mm increments)



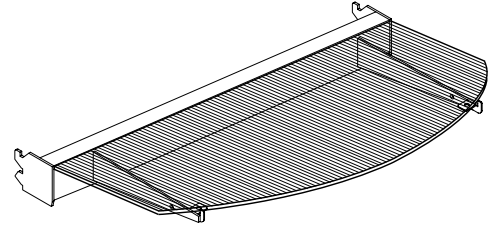
Lumishelf™ Radius LED Shelf Assembly

- Radius Lumishelf™ Surface and Frame has an overall depth of LSSRA that is the nominal depth plus 6" (152 mm)
Example: LSSRA-3614 would have actual depth of 20" (508 mm)
- Load capacity 100 lbs



LSSRA(NW)(ND)-(OPT)

- LSSRA Radius Lumishelf™ Surface with RGSFF Frame Assembly
- NW Nominal Width 36" or 48" (914 mm or 1219 mm)
- ND Nominal Depth 14", 16", and 18" (356 mm, 406 mm or 457 mm)
- R R=Optional Reflector
Blank= No Reflector



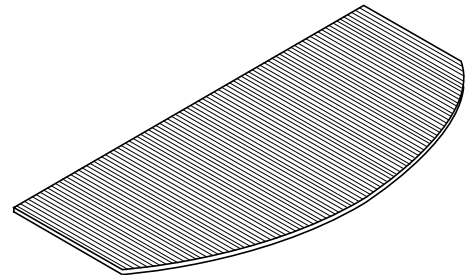
Lumishelf™ Radius Surface

- Radius matches radius on Upper and Base Shelves with Radius Front (SUSRF, SBSRF), not Radius Glass shelves (RGS)
- Load capacity 100 lbs when used with Glass Shelf Radius Frame, GSRFF-(NW)(ND)
- 60" Cord



LSSR(NW)(ND)-(OPT)

- LSSR Lumishelf™ Surface with Radius Front
- NW Nominal Width 3' or 4' (914 mm or 1219 mm)
- ND Nominal Depth 14", 16" and 18" (356 mm, 406 mm or 457 mm)
- R R=Optional Reflector
Blank= No Reflector



Lumishelf™ Glass Shelf Radius Frame

- Glass Shelf Frame for Lumishelf™ Radius Surface
- Lumishelf™ Radius Surface ordered separately

GSRFF-(NW)(ND)

- GSRFF Glass Shelf Radius Front Frame
- NW Nominal Width 3' or 4' (914 mm or 1219 mm)
- ND Nominal Depth 14", 16" and 18" (356 mm, 406 mm or 457 mm)

