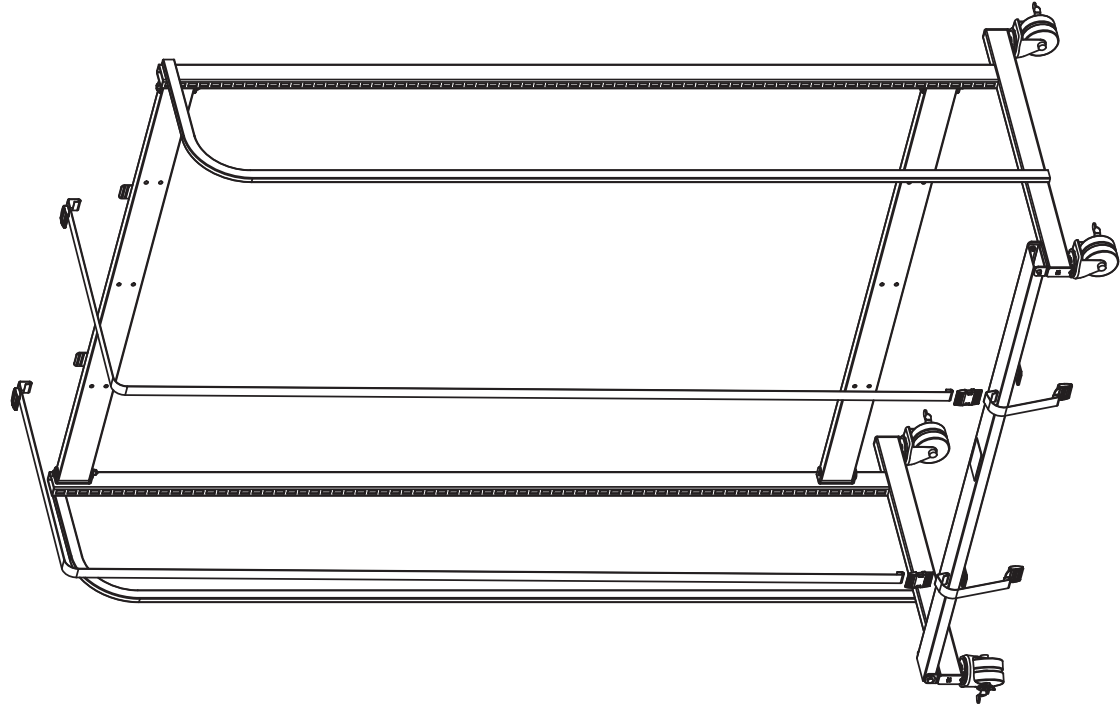


# ASY FOR FOLDING SHELF CARRIAGE



**NOTE: THIS PRODUCT IS NOT DESIGNED FOR MERCHANDISING PURPOSES. ONLY FOR SHELF STORAGE.**

**!!!!DO NOT MERCHANDISE!!!!**

**LOAD CAPACITY FOR SHELF CARRIAGE IS 500 LBS**

**\*\*\* ADDITIONAL CENTER UPRIGHTS CAN BE ORDERED SEPARATELY\*\*\***

**SEE SHEET 4 FOR INSTRUCTIONS ON INSTALLING A MFSCAU (MADIX FOLDING SHELF CARRIAGE ADD-ON UPRIGHT)**

**Madix**

**ASY-80033199**

P.O. BOX 729 TERRELL, TEXAS 75160  
214-515-5400 / 800-776-2348

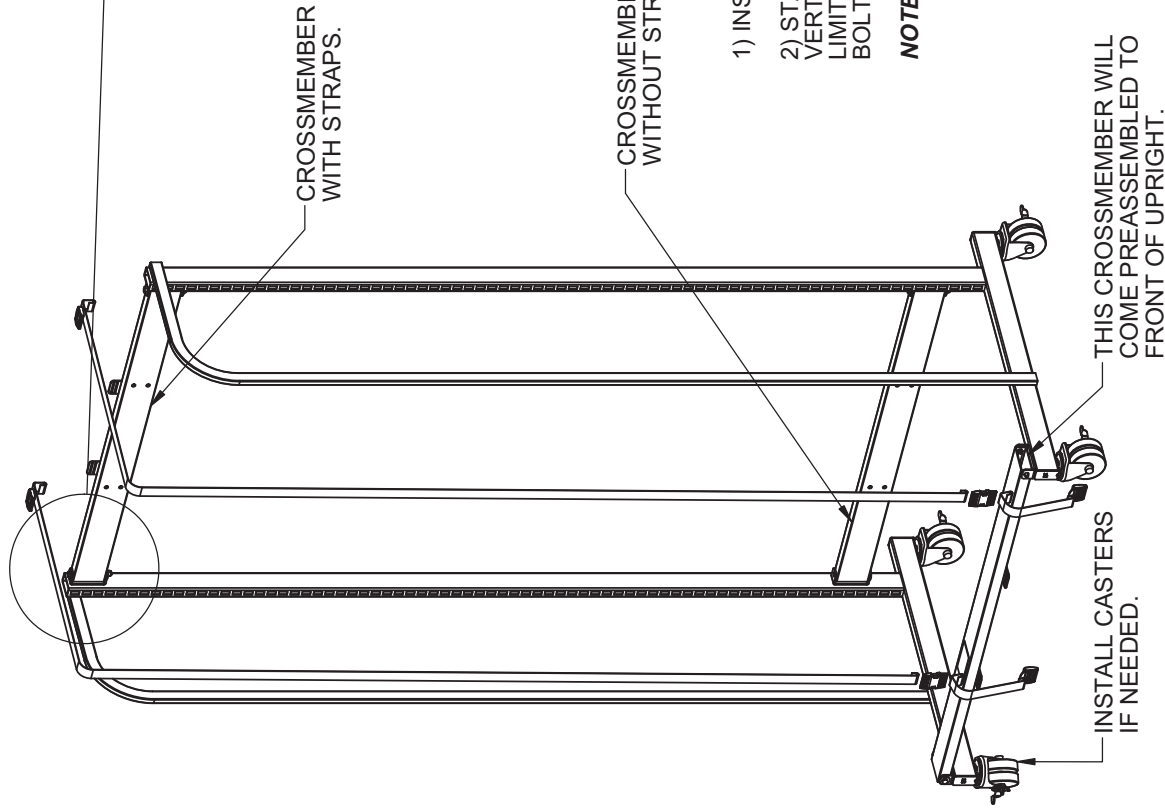
PAGE 1 OF 3

REV. 00

08/12/13 DRD ECM # 500000013334

# ASY FOR FOLDING SHELF CARRIAGE

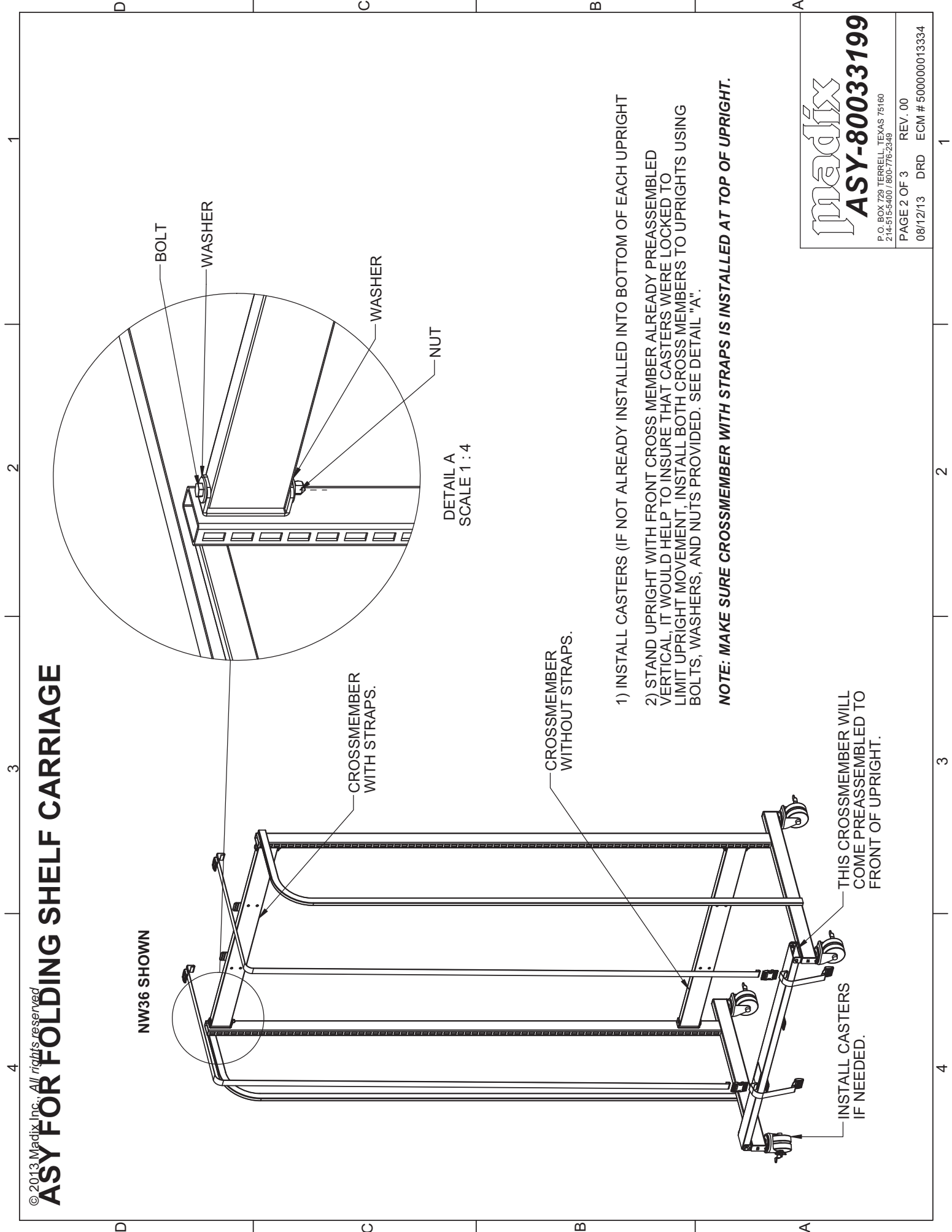
NW36 SHOWN



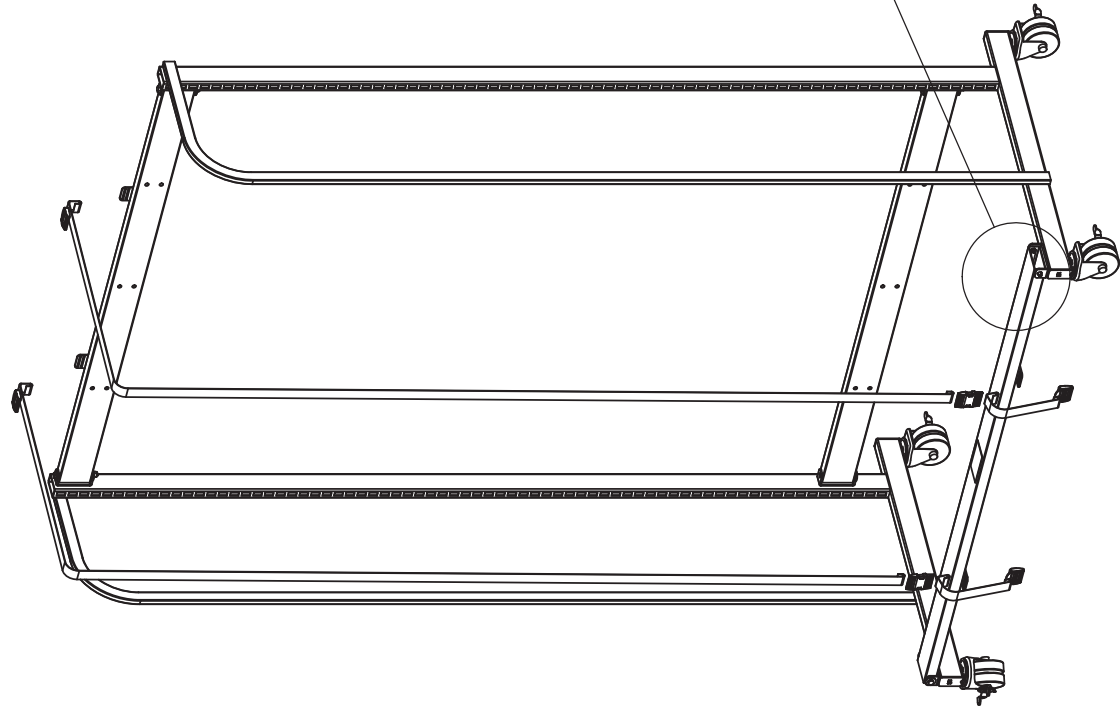
DETAIL A  
SCALE 1 : 4

- 1) INSTALL CASTERS (IF NOT ALREADY INSTALLED INTO BOTTOM OF EACH UPRIGHT
  - 2) STAND UPRIGHT WITH FRONT CROSS MEMBER ALREADY PREASSEMBLED VERTICAL, IT WOULD HELP TO INSURE THAT CASTERS WERE LOCKED TO LIMIT UPRIGHT MOVEMENT, INSTALL BOTH CROSS MEMBERS TO UPRIGHTS USING BOLTS, WASHERS, AND NUTS PROVIDED. SEE DETAIL "A".
- NOTE: MAKE SURE CROSSMEMBER WITH STRAPS IS INSTALLED AT TOP OF UPRIGHT.**

<b>Madix</b>	
<b>ASY-80033199</b>	
P.O. BOX 729 TERRELL, TEXAS 75160 214-515-5400 / 800-776-2348	
PAGE 2 OF 3	REV. 00
08/12/13 DRD	ECM # 500000013334

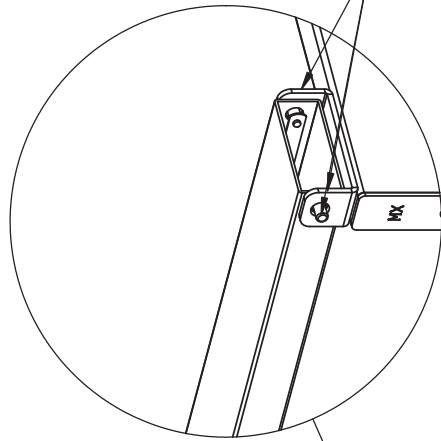


# ASY FOR FOLDING SHELF CARRIAGE



3) REPEAT STEP 2 FOR OTHER UPRIGHT.

4) SECURE FRONT CROSSMEMBER BY INSERTING SNAP BUTTON INTO CHANNEL OF SECOND UPRIGHT. SEE DETAIL "B".

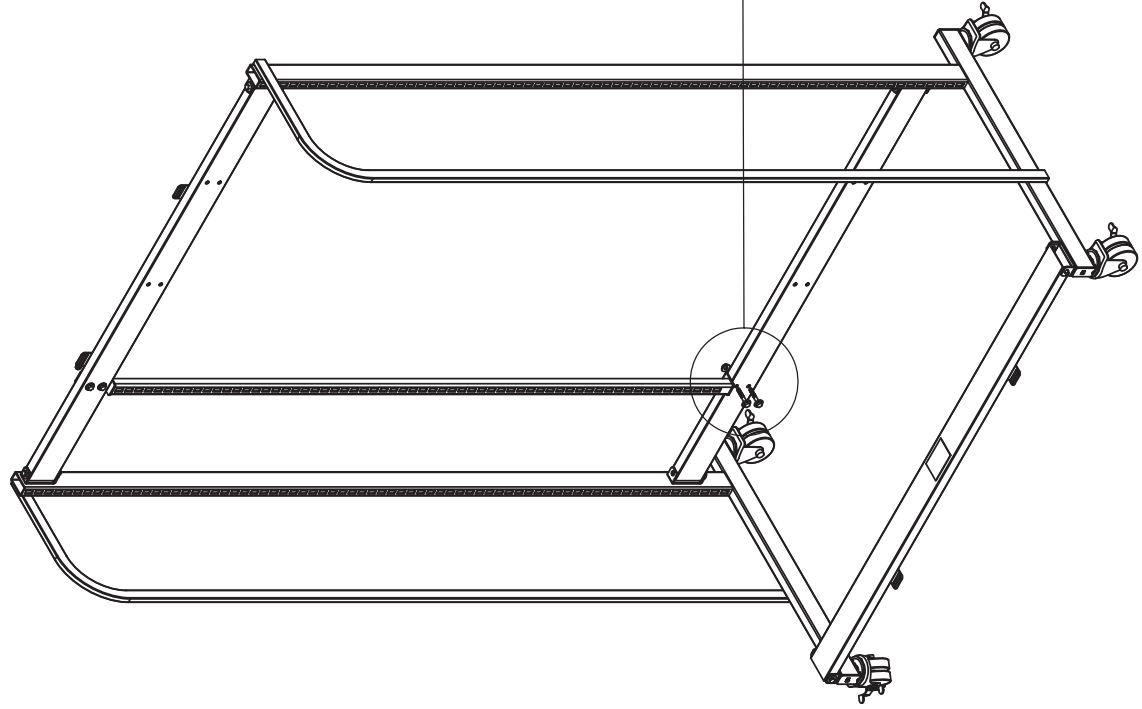


<b>Madix</b>	
<b>ASY-80033199</b>	
P.O. BOX 729 TERRELL, TEXAS 75160 214-515-5400 / 800-776-2348	
PAGE 3 OF 3	REV. 00
08/12/13 DRD	ECM # 500000013334

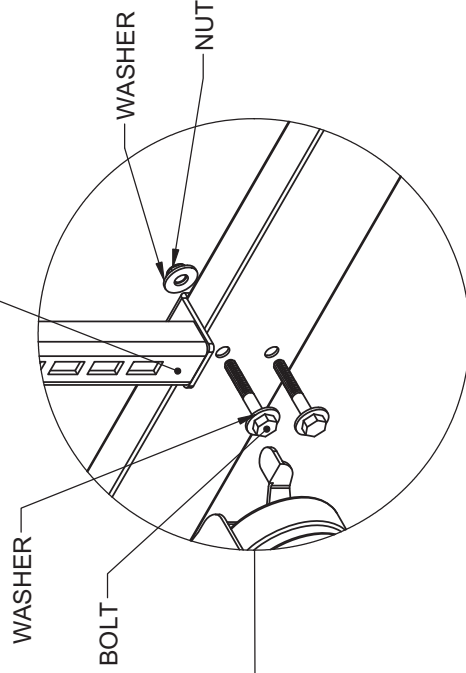
# ASY FOR MFSCAU (ordered separately)

- 1) Line up MFSCAU with appropriate mounting holes.
- 2) Secure to top and bottom crossbars with provided hardware.
- 3) Make sure the 1" gap is at the bottom of the add-on upright. see below.

Mounting holes are punched in 6" increments to allow for 6", 12", 18", 24", 30" and 48" slot centerlines.



**\*\*1" GAP MUST BE INSTALLED AT BOTTOM**



DETAIL C  
SCALE 1 : 4

<b>Madix</b> <b>ASY-80033199</b>	
P.O. BOX 729 TERRELL, TEXAS 75160 214-515-5400 / 800-776-2348	
PAGE 3 OF 3	REV. 00
08/12/13 DRD	ECM # 500000013334

