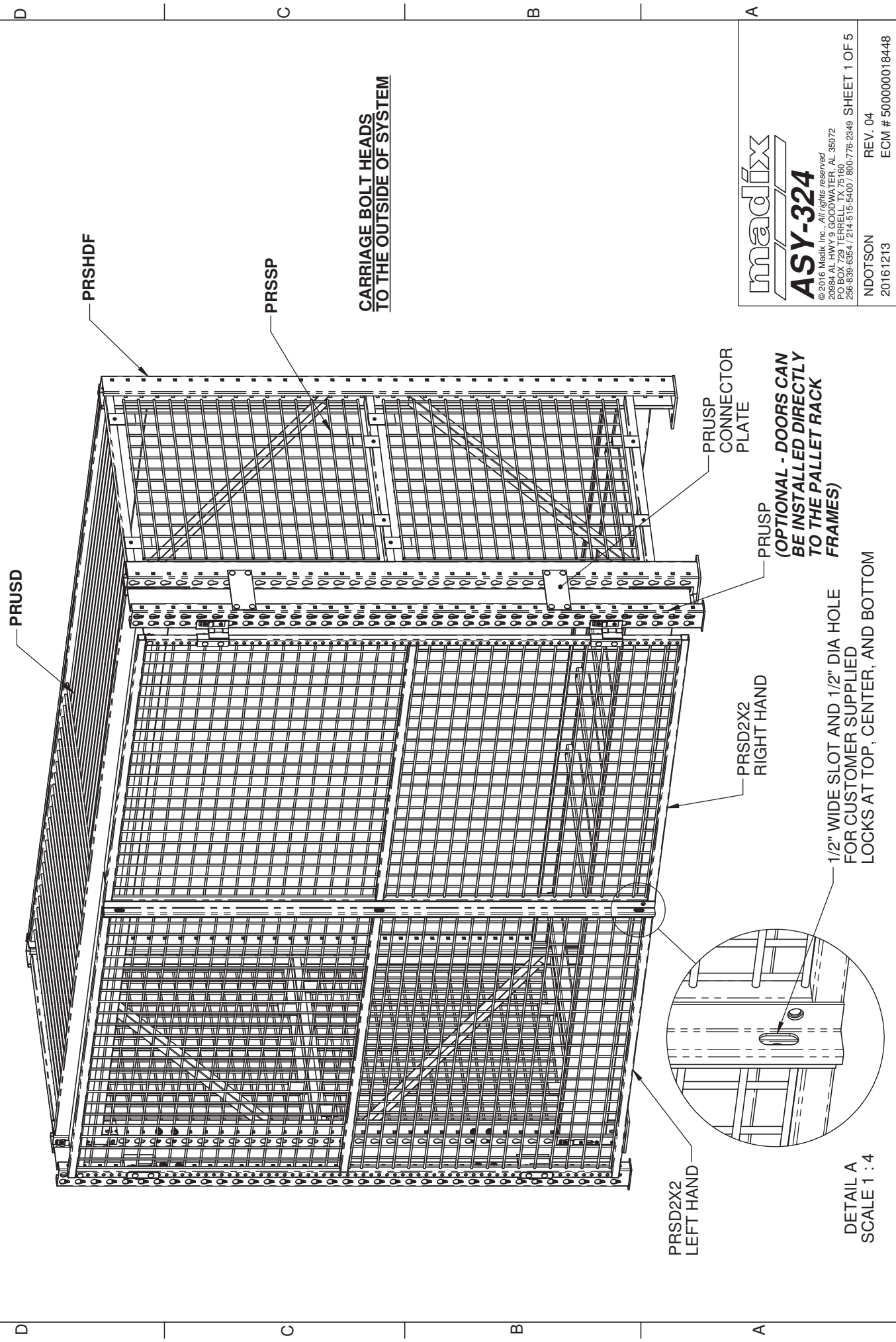


REV.	DESCRIPTION	DATE
04	EMPHASIZED THE OPTION OF MOUNTING THE DOORS TO EITHER THE PRUSB OR THE PR FRAMES.	12/13/2016

04



madix
ASY-324

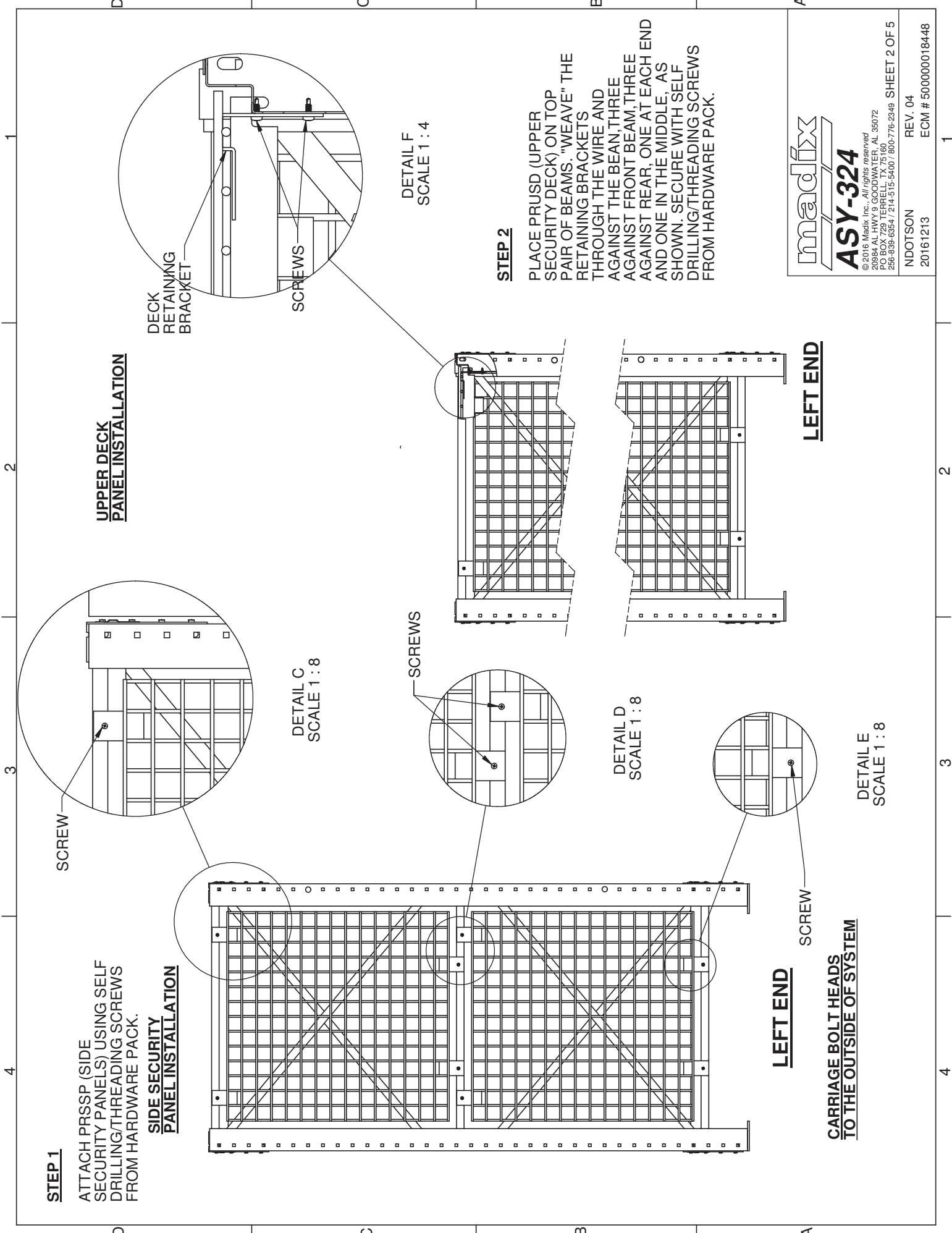
© 2016 Madix, Inc., All rights reserved
20884 AL HWY 9 GOODWATER, AL 35072
P.O. BOX 729 TERRELL, TX 75760
256-639-6654 / 214-315-5400 / 800-776-2349

REV. 04
ECM # 500000018448

PRUSP
(OPTIONAL - DOORS CAN BE INSTALLED DIRECTLY TO THE PALLET RACK FRAMES)

1/2" WIDE SLOT AND 1/2" DIA HOLE FOR CUSTOMER SUPPLIED LOCKS AT TOP, CENTER, AND BOTTOM

DETAIL A
SCALE 1 : 4



STEP 1

ATTACH PRSSP (SIDE SECURITY PANELS) USING SELF DRILLING/THREADING SCREWS FROM HARDWARE PACK.

SIDE SECURITY PANEL INSTALLATION

SCREW

DETAIL C
SCALE 1 : 8

SCREWS

DETAIL D
SCALE 1 : 8

SCREW

LEFT END

CARRIAGE BOLT HEADS TO THE OUTSIDE OF SYSTEM

DETAIL E
SCALE 1 : 8

UPPER DECK PANEL INSTALLATION

DECK RETAINING BRACKET

SCREWS

DETAIL F
SCALE 1 : 4

STEP 2

PLACE PRUSD (UPPER SECURITY DECK) ON TOP PAIR OF BEAMS. "WEAVE" THE RETAINING BRACKETS THROUGH THE WIRE AND AGAINST THE BEAN, THREE AGAINST FRONT BEAM, THREE AGAINST REAR, ONE AT EACH END AND ONE IN THE MIDDLE, AS SHOWN. SECURE WITH SELF DRILLING/THREADING SCREWS FROM HARDWARE PACK.

LEFT END

madrix

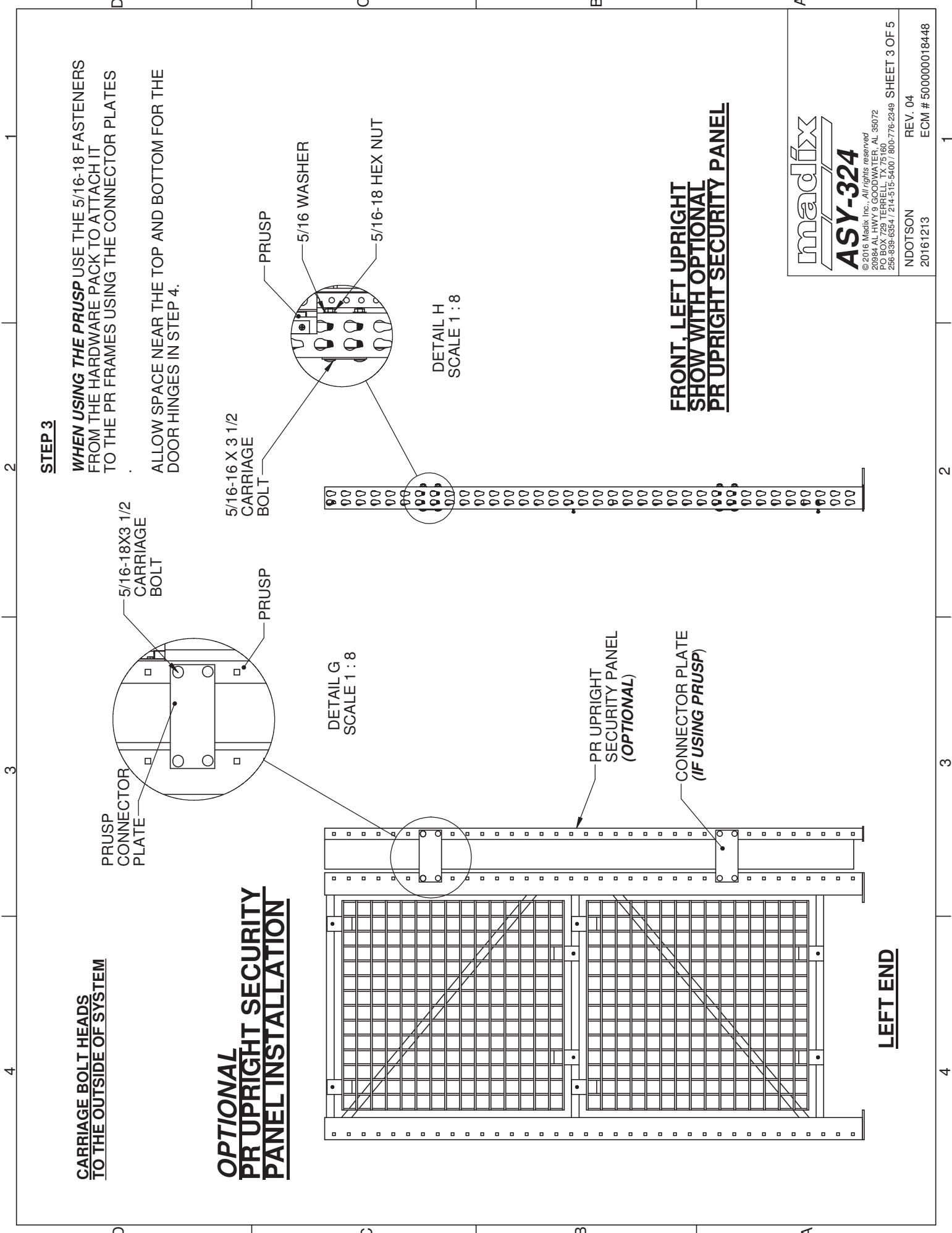
ASY-324

© 2016 Madix Inc., All rights reserved
20884 AL HWY 9 GOODWATER, AL 35072
P.O. BOX 729 TERRELL, TX 75760
256-639-6654 / 214-315-5400 / 800-776-2349 SHEET 2 OF 5

NDOTSON
20161213

REV. 04

ECM # 500000018448



STEP 3

WHEN USING THE PRUSP USE THE 5/16-18 FASTENERS FROM THE HARDWARE PACK TO ATTACH IT TO THE PR FRAMES USING THE CONNECTOR PLATES

ALLOW SPACE NEAR THE TOP AND BOTTOM FOR THE DOOR HINGES IN STEP 4.

CARRIAGE BOLT HEADS TO THE OUTSIDE OF SYSTEM

OPTIONAL PR UPRIGHT SECURITY PANEL INSTALLATION

FRONT, LEFT UPRIGHT SHOW WITH OPTIONAL PR UPRIGHT SECURITY PANEL

LEFT END

madrix
ASY-324
 © 2016 Madix Inc., All rights reserved
 20884 AL HWY 9 GOODWATER, AL 35072
 P.O. BOX 729 TERRELL, TX 75760
 256-639-6654 / 214-315-5400 / 800-776-2349 SHEET 3 OF 5
 NDOTSON
 20161213
 REV. 04
 ECM # 500000018448

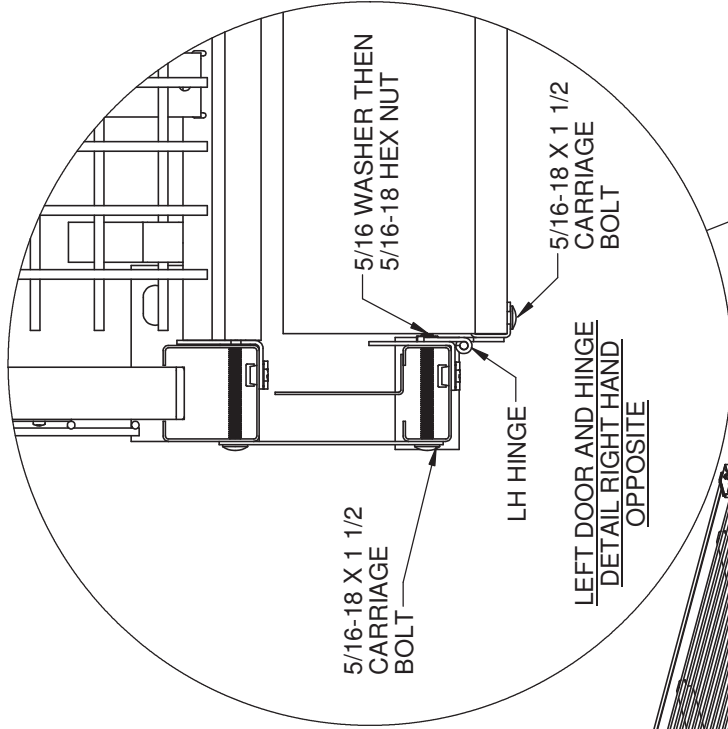
**CARRIAGE BOLT HEADS
TO THE OUTSIDE OF SYSTEM**

STEP 4

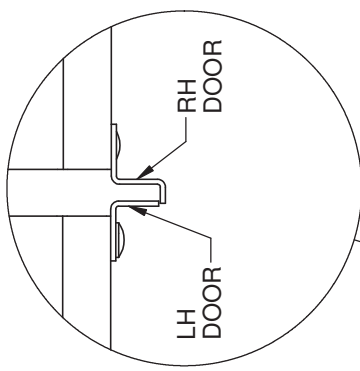
**DOORS CAN BE
CONNECTED DIRECTLY
TO THE PALLET RACK
FRAME IF NOT
USING THE OPTIONAL
PRUSP.**

SECURE EITHER LH OR RH DOOR TO
PRUSP OR PALLET RACK FRAME
WITH 5/16-18 FASTENERS.

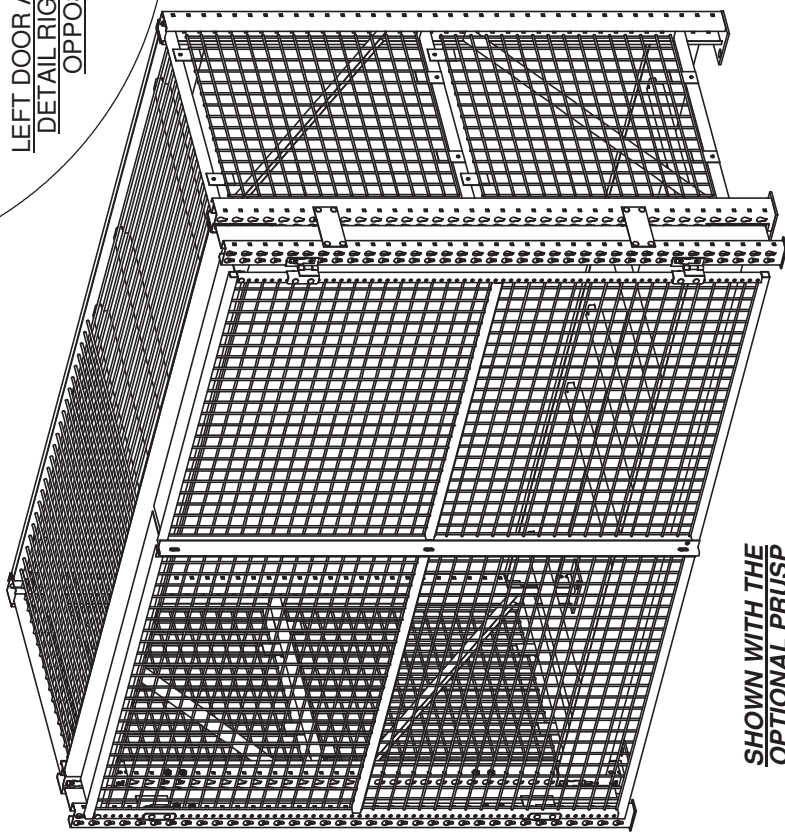
INSTALL THE OPPOSITE DOOR.



DETAIL J
SCALE 1 : 6

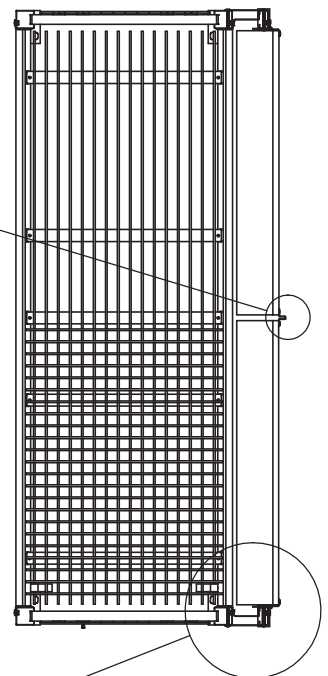


DETAIL K
SCALE 1 : 4



**SHOWN WITH THE
OPTIONAL PRUSP**

ISOMETRIC VIEW



TOP

madix

ASY-324

© 2016 Madix Inc., All rights reserved
20884 AL HWY 9 GOODWATER, AL 35072
P.O. BOX 729 TERRELL, TX 75760
256-639-6654 / 214-315-5400 / 800-776-2349 SHEET 4 OF 5

NDOTSON
20161213

REV. 04
ECM # 500000018448

**SECURITY DOOR
INSTALLATION**

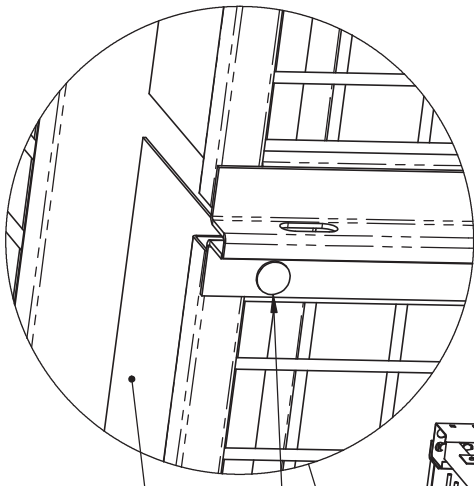
**CARRIAGE BOLT HEADS
TO THE OUTSIDE OF SYSTEM**

STEP 5

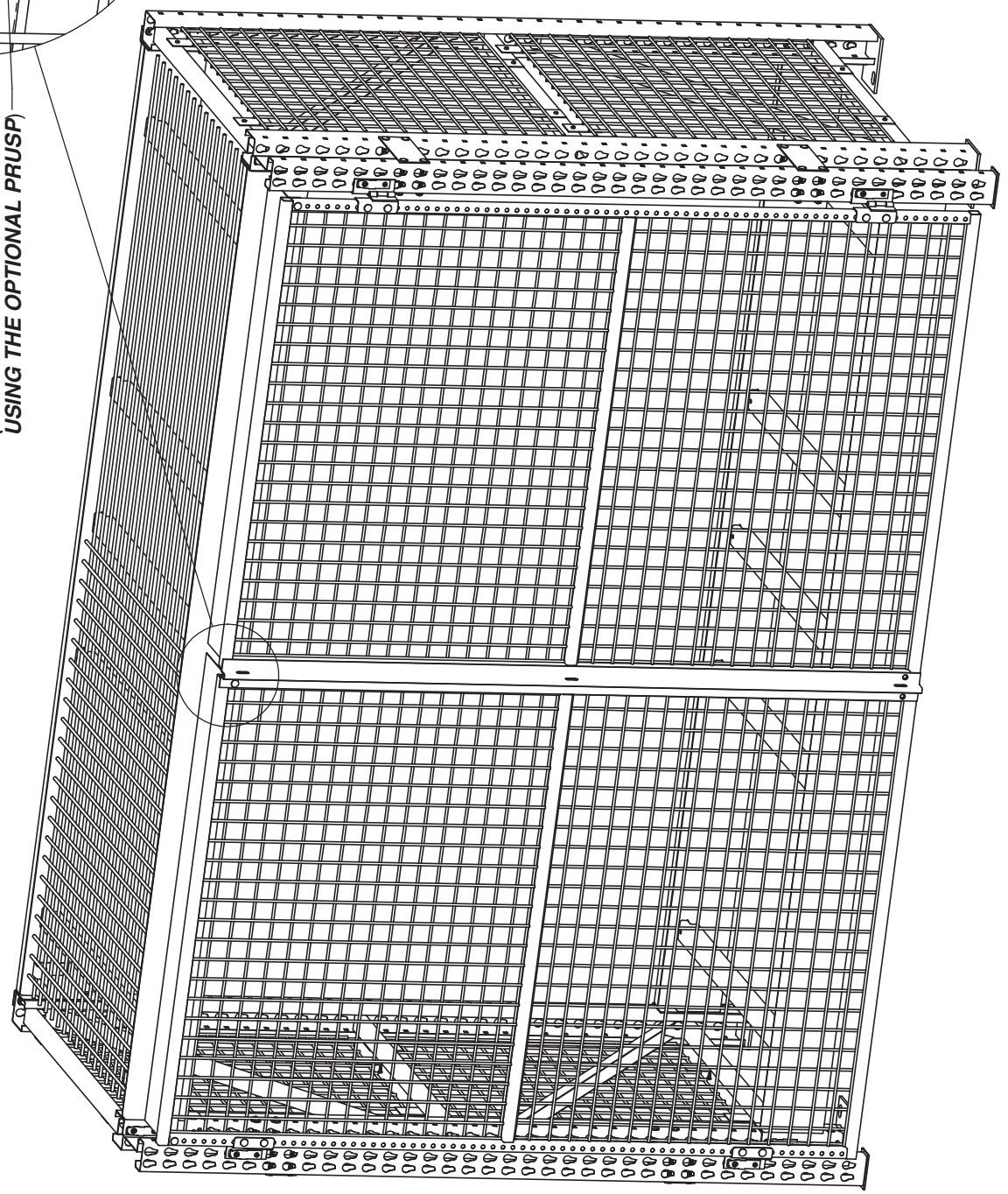
IF USING THE OPTIONAL PRUSP AT THE TOP OF EACH
DOOR USE THE 1/4-20 FASTENERS AND ATTACH
THE SHEET METAL SECURITY PANEL

PRSD2X2
UPPER SECURITY
PANEL, SHEET METAL
**(ONLY USED WHEN
USING THE OPTIONAL PRUSP)**

1/4-20 FASTENERS
**(ONLY USED WHEN
USING THE OPTIONAL PRUSP)**



DETAIL 1
SCALE 1 : 4



madix
ASY-324

© 2016 Madix Inc., All rights reserved
20884 AL HWY 9 GOODWATER, AL 35072
P.O. BOX 729 TERRELL, TX 75760
256-639-6554 / 214-315-5600 / 800-776-2349 SHEET 5 OF 5

NDOTSON
20161213

REV. 04
ECM # 500000018448