

Y-Gondola

- Create focal points in any merchandising category
- Encourage customers to interact with featured merchandise
- Constructed of standard Maxi Line components

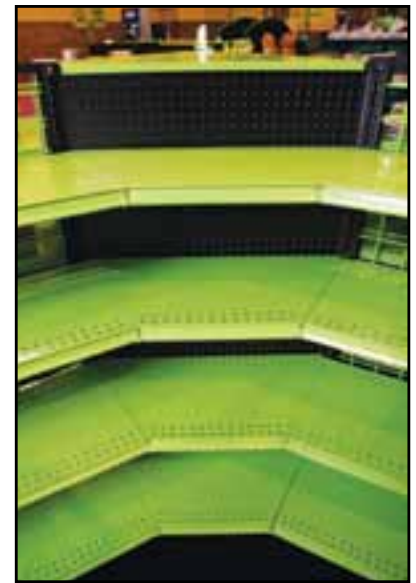
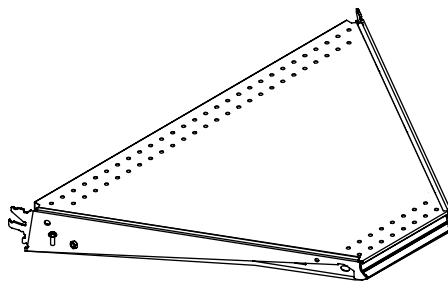


Y-Gondola Inside Corner Upper Shelf

- Includes brackets for mounting shelf
- Load capacity 300 lbs

YSGICUS(ND)

- YSG Y-Gondola
- ICUS Inside Corner Upper Shelf
- ND Nominal Depth 10" to 24" in 2" increments (254 mm or 610 mm in 51 mm increments)

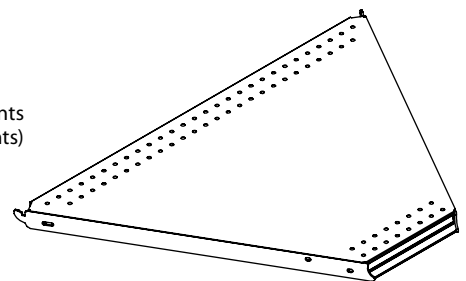


Y-Gondola Inside Base Deck

- 300 lb load capacity

YSGIBS(ND)

- YSG Y-Gondola
- IBS Inside Base Shelf
- ND Nominal Depth 10" to 24" in 2" increments (254 mm to 610 mm in 51 mm increments)

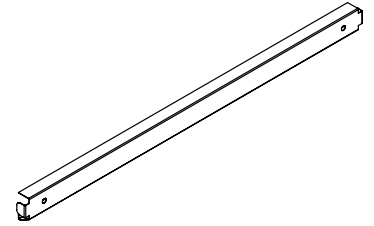


Y-Gondola Junction Center and Lower Spanner

- Order six per Y-Gondola

YSGJSC24

YSG Y-Gondola
 JSC Junction Center Spanner
 24 24" (610 mm)

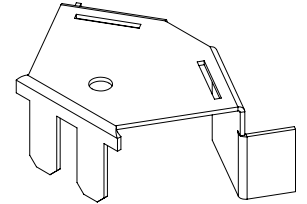
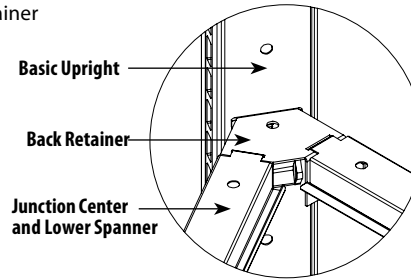


Y-Gondola Back Retainer

- Order six per Y-Gondola

YSGBR

YSG Y-Gondola
 BR Back Retainer

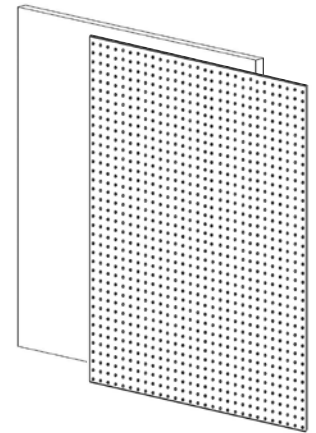


Y-Gondola Back

- Order three panels per Y-Gondola

YSG(OPT)B(NH)I

YSG Y-Gondola
 OPT H=Hardboard, P=Pegboard
 B Back
 NH 42" to 96" in 6" increments
 (1067 mm to 2438 mm in 152 mm increments)
 I I=Inside

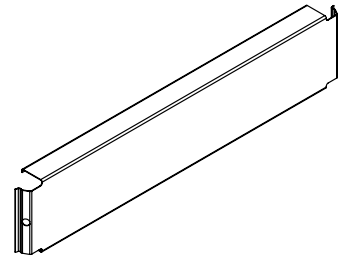


Y-Gondola Inside Kickplate

- Order three per Y-Gondola

YSGIKP(ND)

YSG Y-Gondola
 IKP Inside Kickplate
 ND Nominal Depth 10" to 24"
 in 2" increments
 (254 mm to 610 mm in 51 mm increments)



Y-Gondola Junction Top Cap

- Order one per Y-Gondola

YSGJTC

YSG Y-Gondola
 JTC Junction Top Cap

