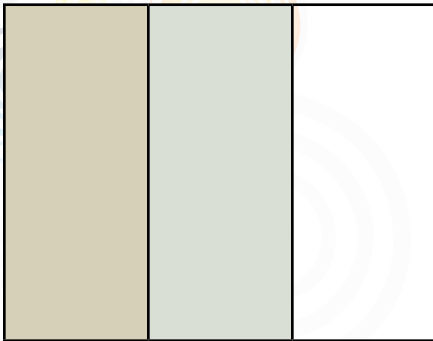


Standard Coatings

Standard coatings for standard products are Sahara, Oyster, and Snow White. On Pallet Rack, Wide Span, and Storage Shelving, standard coatings are Blue Gray and Sahara. Standard coatings for most wire products are Silver Vein and Powder Chrome.

Standard Coatings for Standard Product Shelving

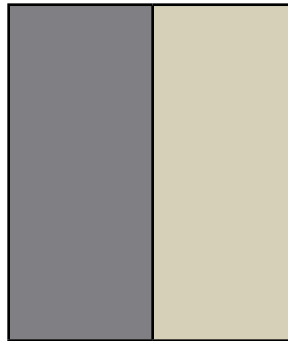


Sahara
SA - PC002

Oyster
OY - PC027

Snow White
SW - PC049

Standard Coatings for Pallet Rack, Wide Span, & Storage Shelving



Blue Gray
BG - PC006

Sahara
SA - PC002

Standard Coatings for Most Wire Fixtures



Silver Vein
PC031

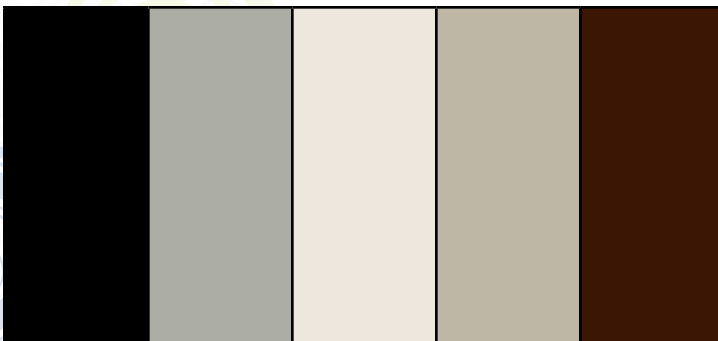
Powder Chrome
PC008

Non-Returnable Standard Coatings

The following colors can be ordered at no additional charge. Products ordered in these colors cannot be returned.

No-Charge Coatings for Metal

Wood Backs may have an upcharge.



Satin Black
SB - PC059

Dove Gray
DG - PC044

Dover White
P60 - PC087

Skyline Gray
P234 - PC039

Chocolate
CH - PC003

Finishes listed on this page can be painted on most products at no additional charge. The only products subject to return are those painted with Finishes listed under "Standard Coatings."

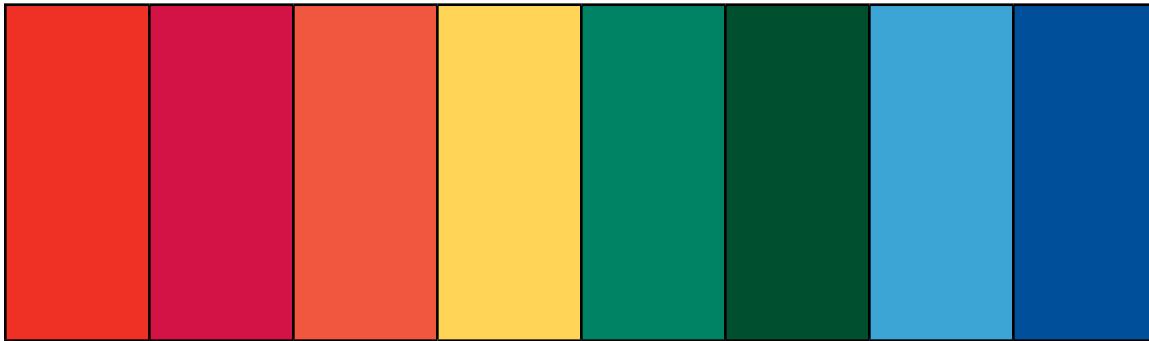
NOTE!

Color and printed samples may vary from actual painted products. Request color chip if exact match is required.

Non-Returnable Coatings

Madix offers several optional coatings to provide customers with additional color choices. A minimum upcharge will apply when choosing optional colors. Each product in the Madix Catalogs that will accept an optional color will have a per piece color upcharge located in the Pricing Guides.

Non-Returnable Coatings



Mandarin
MA - PC024

Spectrum Red
P150 - PC053

Bright Orange
P66 - PC068

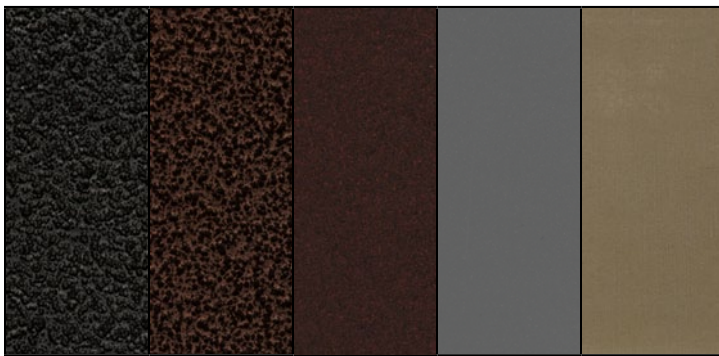
Yellow
P603 - PC603

Spectrum Green
SG - PC013

Hunter Green
P06 - PC096

Neon Blue
NE - PC023

Spectrum Blue
P149 - PC145



Silver Vein
P - PC834

Copper Vein
P - PC111

Black Rust
PC136

Reflection Silver
PC916

Clear Coat
PC073

NOTE!

Color and printed samples may vary from actual painted products. Request color chip if exact match is required.

NOTE!

Clear coat finish may vary in color due to substrate material

Carpet and Fabric

Madix offers two standard colors of carpet and fabric. These abrasion-resistant carpets are recommended for heavy-duty use on Base and Upper Shelves. These ribbed fabrics are well-suited for use on back panels and for light-duty uses on Base and Upper Shelves.

Carpet



Charcoal
CCH

Adobe
CAD

Fabric



Gunmetal
FGU

Cream
FCR

NOTE!

Color carpet and fabric samples may vary from actual products. Request color sample if exact match is required.

High Pressure Laminate

"HPL" should be specified for wear (horizontal) surfaces or for small volume requirements where Thermofused materials are not available. HPL has high wear and is impact resistance.

All Madix wood products use low-VOC, low-Formaldehyde substrates and adhesives and comply with California Air Resources Board Regulations. Products may qualify for LEED credits under 4.3,4 Environmental Quality, 4.1,2 Recycled Materials, and 6.0 Rapidly Renewable Resources.



Natural Maple
L696

African Limba
L702

Chicago Blues
L897

Kensington Maple
L808

North Sea
L85

Natural Pear*
L649

Amber Cherry*
L795

Golden Oak*
LO

Spectrum Green*
LSG

* May require additional lead time

NOTE!

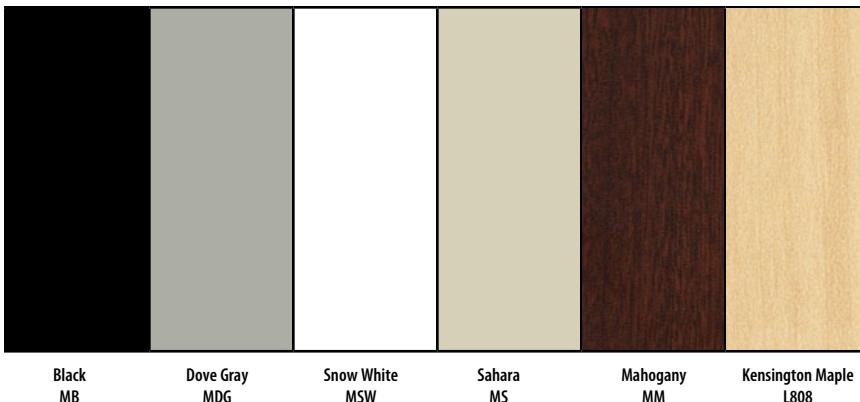
Selections refer to thick [5/8" (15.9 mm) or thicker] panels used for counters, end panels, etc. Back Panels [1/4" (6.4 mm)] selections may vary – inquire through Customer Service for specific requirements.

NOTE!

There will be a \$100 set-up charge per order for laminate finishes not listed

Thermofused Panels

Thermofused panels are ideal for non-wear surfaces and have substantial impact and wear characteristics compared to melamine panels previously available. The product is produced using hot press laminating polyester or melamine resin impregnated self-bonding paper to wood substrate. Performance specifications are available from the American Laminations Association. Madix does not recommend the use of Thermofused panels on horizontal or other wear surfaces.



Black
MB

Dove Gray
MDG

Snow White
MSW

Sahara
MS

Mahogany
MM

Kensington Maple
L808

NOTE!

Thermofused Panel and High Pressure Laminate samples may vary from actual products. Request sample if exact match is required.

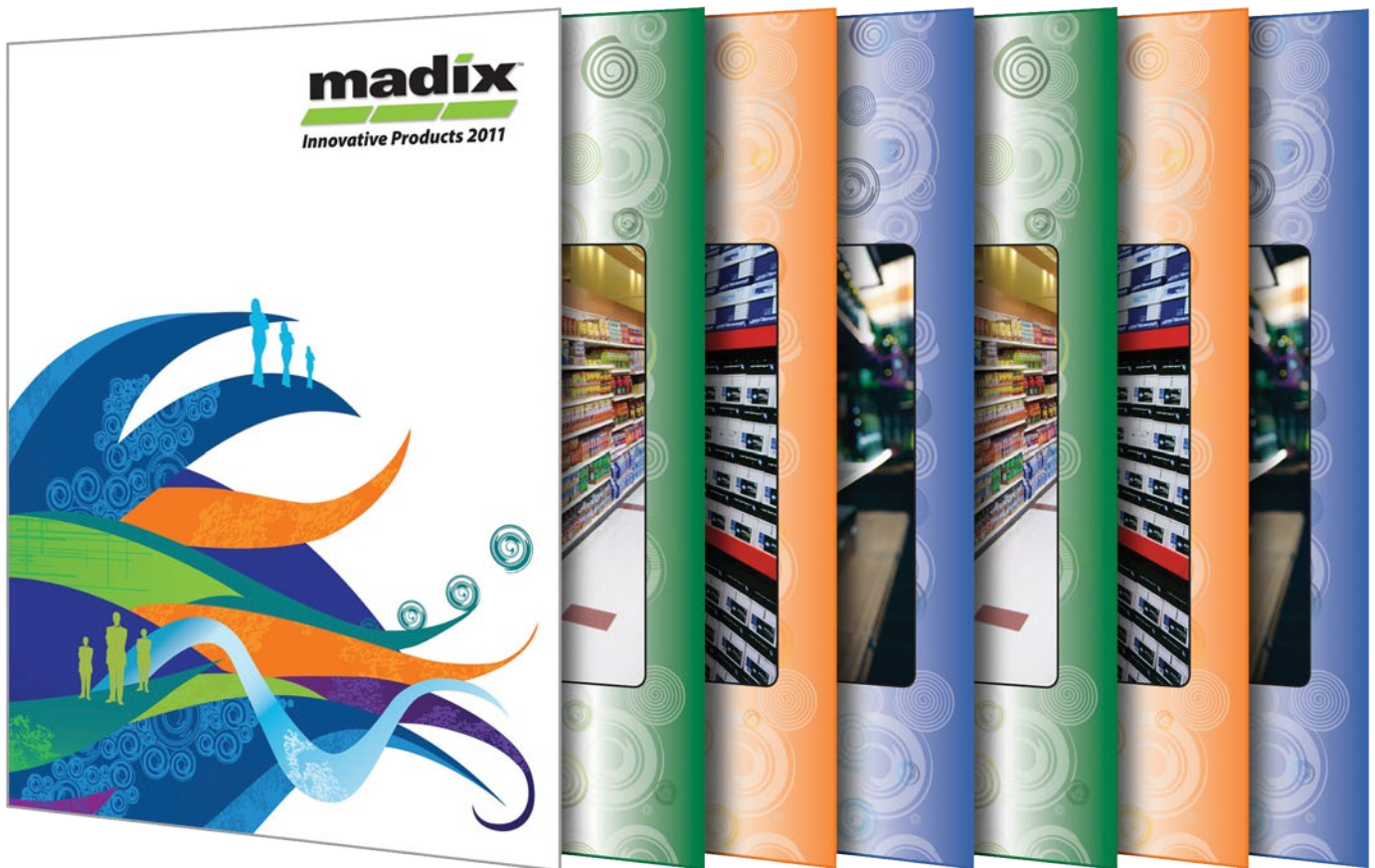


Finishes



WIN³

Madix's Innovation
Retailer's Inspiration
Customer's Motivation



madix™

madixinc.com/catalogs

Texas 500 Airport Road, Terrell, TX 75160 | 800.776.2349

Alabama 1537 S Main Street, Goodwater, AL 35072 | 800.633.6282

